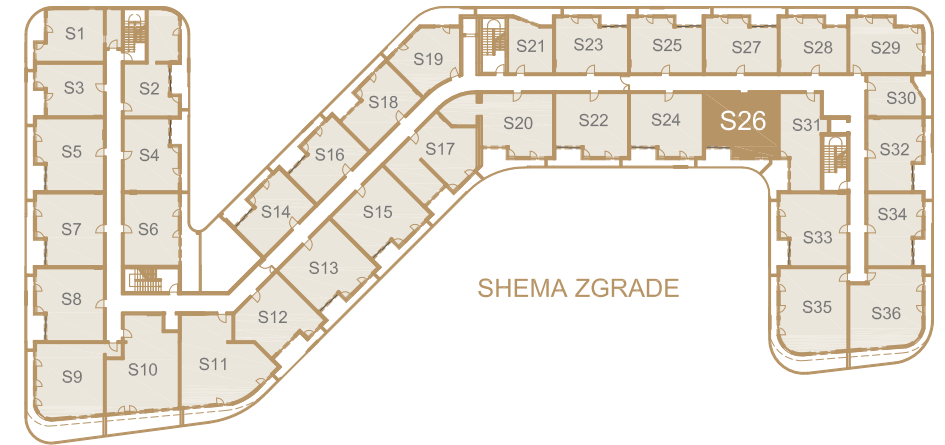
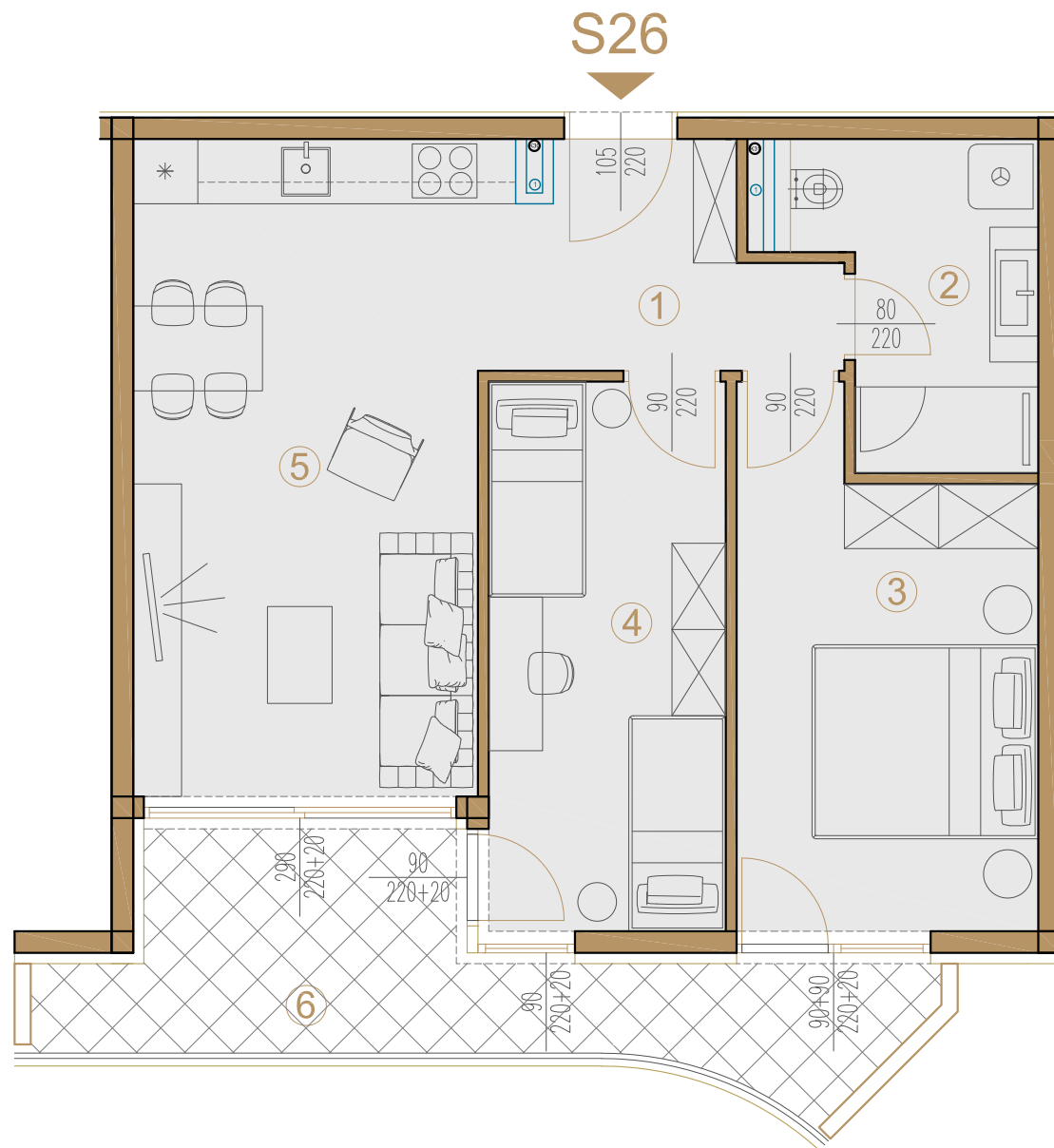




STAN S26



ISKAZ NETO POVRŠINA

STAN S26				
br.	naziv prostorije	netto m <sup>2</sup>	koef.	netto x koef. m <sup>2</sup>
1	hodnik + garderoba	4,66	1	4.66
2	kupaonica	6,06	1	6.06
3	spavaća soba	12,57	1	12.57
4	spavaća soba	11,22	1	11.22
5	kuhinja+db+blag.	20,82	1	20.82
S26 zatvoreno neto:		55.33		55.33
6	lođa	10,70	0,75	8.02
S26 sveukupno neto:		66.03		63.36

