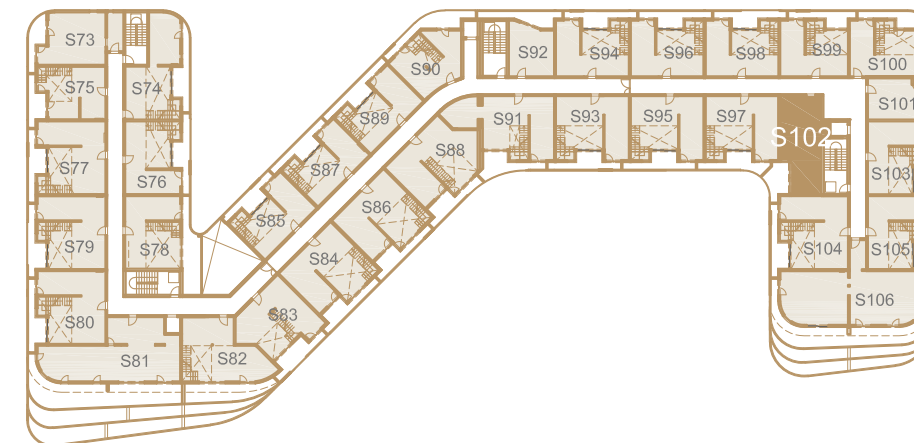
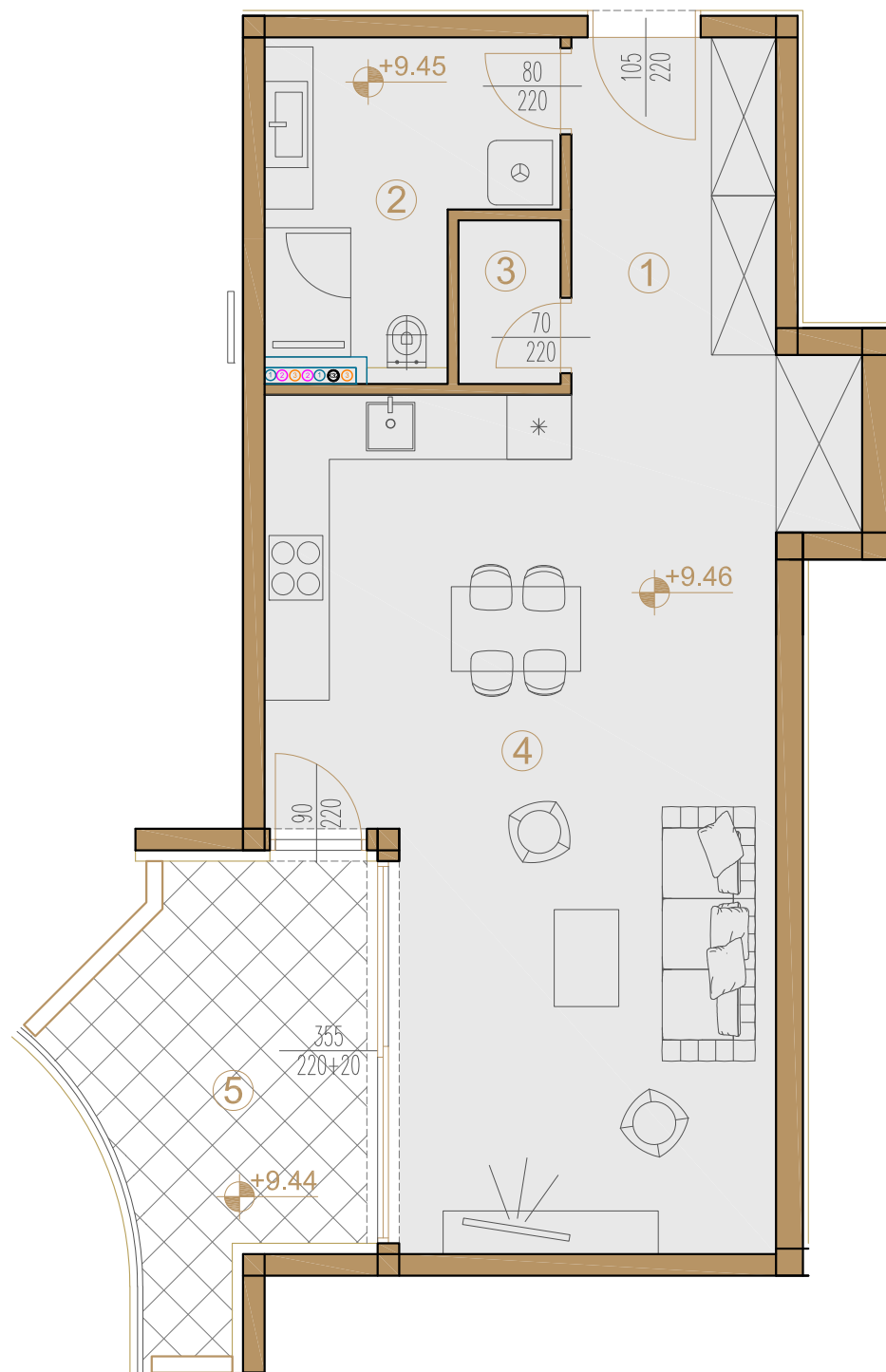




### STAN S102

### S102



### ISKAZ NETO POVRŠINA

STAN S102				
br.	naziv prostorije	netto m <sup>2</sup>	koef.	netto x koef. m <sup>2</sup>
1	hodnik + garderoba	8,84	1	8.84
2	kupaonica	6,95	1	6.95
3	kupaonica	1,44	1	1.44
4	kuhinja+db+blag.	31,76	1	31.76
S102zatvoreno neto:		48.99		48.99
5	lođa	9,29	0,75	6.97
S102 sveukupno neto:		58.28		55.96

